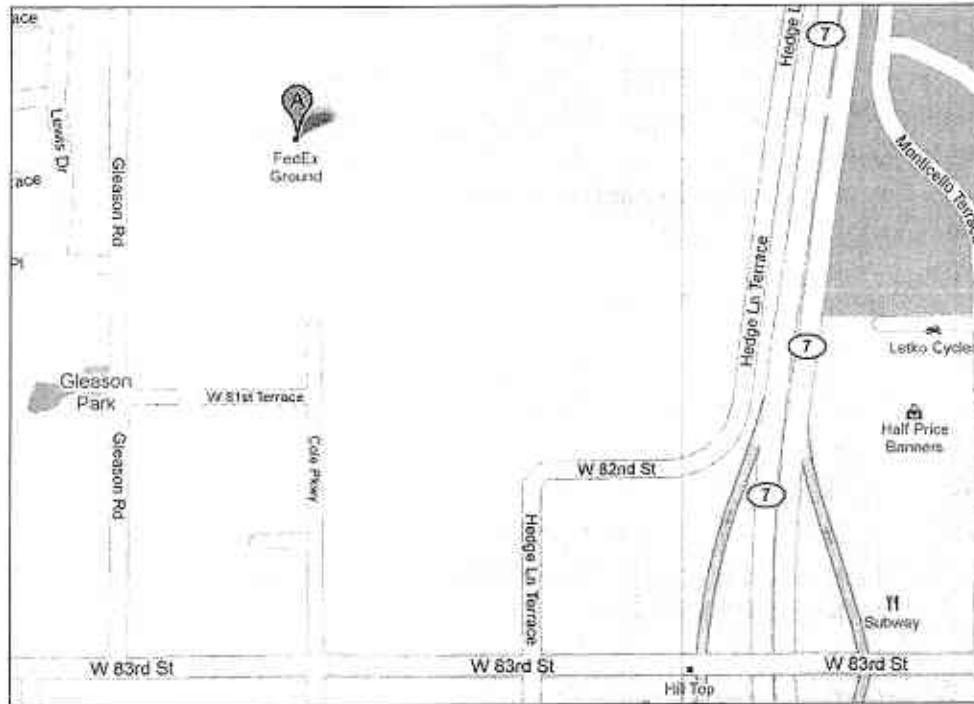




Lenexa, KS – 641



Locator maps are for informational purposes **ONLY** and are not necessarily approved routes.

Please ask Service Manager for the FedEx approved route in TMS.

Directions	Address
<p>From I 70-Take I 70 to Bonner Springs exit (K-7 South). Go south to 83rd Street. Go west on 83rd to Cole Pkwy. Take right on Cole Pkwy to hub.</p> <p>From I 35- Take I 35 to I 435 N. Take I 435 to K-10 W. Take K-10 to K-7 N. Go south to 83rd Street. Go west on 83rd to Cole Pkwy. Take right on Cole Pkwy to hub.</p>	<p>8000 Cole Parkway Shawnee, KS 66227</p> <p>(913) 441-7532 or (800)-752-4941 Fax (816) 413-1055</p>

Route Detail Report

Origin 0917/IDST
Destination 0641/LNXA
Status Active
Route Type Standard
Configuration Double
 Authorized for Payment
 Toll Eligible
Creation Date/Time Oct 30, 2009 10:02PDT
Start Date
End Date
User Initials SLN
Total Miles 1538
Runtime (hrs) 30.2
Comments Approved Tolls : KS # 50 Wichita US-54/400 Kellogg --> KS # 127 Emporia: I-35 N [KTA50]^[KTA127]

State	Mileage	Route Directions by State
CA	248	old ranch rd e, ferrero pkwy l, n grand ave s, grand ave n, ca 57 e, ca 60 e, i 15 n, i 40 e
AZ	358	i 40 e
NM	386	i 40 e, us 54 e
TX	92	us 54 e
OK	56	us 54 e
KS	398	us 54 e, i 35 n, us 169 n, ks 7 n, w 83rd st l, cole pkwy r